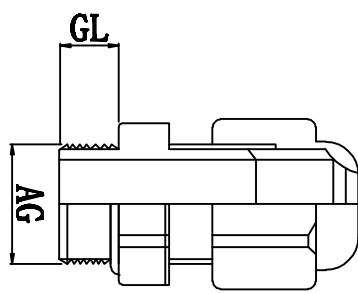
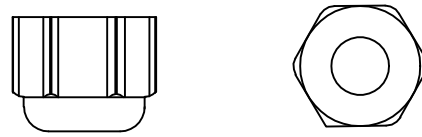
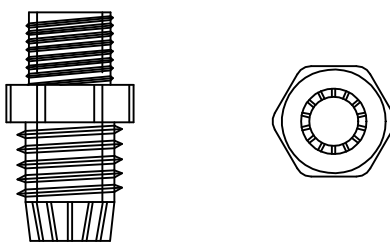
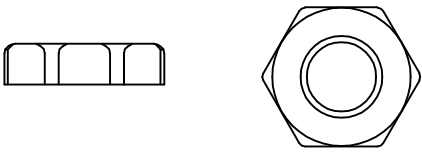


料号 Part NO.	品名 Parts Name	适用电缆 Cable Range (mm)	螺纹外径 Thread O. D AG (mm)	螺纹长度 Thread Length GI (mm)	扳手直径 Spanner Size (mm)
39-HIWA-PG13.5	PG-13.5 电缆固定头	6-12	20.4	15	24



螺帽

本体 夹紧爪

迫紧头

材质: UL尼龙66, 防火等级94V-2, 夹紧爪为橡胶材质  
 特点: 夹紧圈经特殊设计, 拉力强, 对电机不造成损伤  
 用途: 一般机械控制箱、配电箱、机器、电器等电缆固定用  
 防护等级: IP68  
 环境温度: 静态: -40° C, 至+100° C, 短时至+120° C  
 动态: -20° C, 至+80° C, 短时至+120° C



未经许可不得修改和复印  
 该知识产权属于技术质量部;

DIMENSION	TOLERANCES				DWG. BY	liu	UNIT	mm
0.0 0.00	±1.0							
FRIST ANGLE PROJ		A	NEW PART	Sullivan	ZY.WONG	2019/08		
		LTR.	REVISION RECEIVED	DWG. BY	CHK. BY	DATE		
		APP. BY	wang zhijiang	DWG. NO.	39-HIWA-QR-JZ-			
		CHK. BY	Hannigan	REV.	A			
		DWG. BY	liu	UNIT	mm			

HIMA 惠华苏州惠华电子科技有限公司