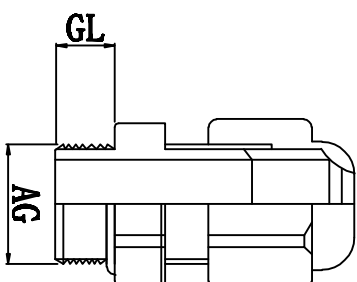
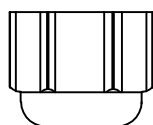
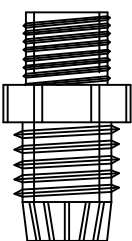
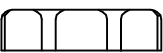
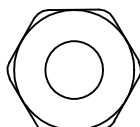
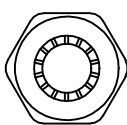
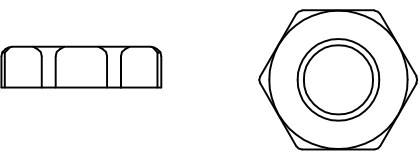


料号 Part NO.	品名 Parts Name	适用电缆 Cable Range (mm)	螺纹外径 Thread O. D AG(mm)	螺纹长度 Thread Length GI (mm)	扳手直径 Spanner Size (mm)
39-HIWA-PG13.5	PG-13.5 电缆固定头	6-12	20.4	10	24



螺帽

本体 夹紧爪

迫紧头

材质: UL尼龙66, 防火等级94V-2, 夹紧圈为橡胶材质  
 特点: 夹紧圈经特殊设计, 拉力强, 对电机不造成损伤  
 用途: 一般机械控制箱、配电盘、机器、电器等电缆固定用  
 防护等级: IP68  
 环境温度: 静态: -40° C, 至+100° C, 短时至+120° C  
 动态: -20° C, 至+80° C, 短时至+120° C



未经许可不得修改和复印  
 该知识产权属于技术质量部;

DIMENSION	TOLERANCES	DWG. BY		UNIT	mm
0.0 0.00	±1.0	liu	wang	UNTT	
FIRST ANGLE PROJ		CHK. BY	REV.	DWG. NO.	
		APP. BY		39-HIWA-QR-JZ-	
A		wang zhijiang		39-HIWA-PG13.5	
NEW PART		DATE			
LTR.		REVISION RECEIVED			
DWG. BY		CHK. BY			
Sullivan		ZY.WONG		2009/08	
HIMA		苏州惠华电子科技有限公司			