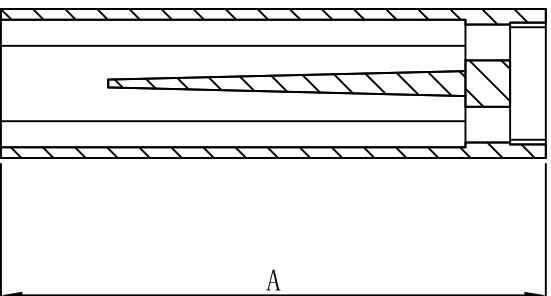
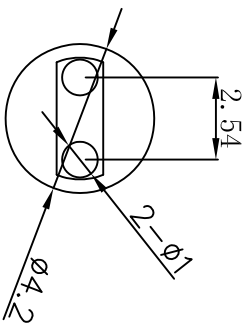


料号 Part NO.	品名 Parts Name	A (MM)
34-LEDEW-15	间隔柱 LEDEW-15	15.0



- ◆ MATERIAL: NYLON 66 (UL)
- ◆ FLAME CLASS: 94V-2
- ◆ COLOR: NATURAL
- ◆ UNIT: mm

用途: 用於保護LED立於PC板上, 使高度一致, 中間隔板設計, 接腳不會彎曲、折斷、短路。



未经并受权不得修改和复印
该知识产权属于技术质量部;

DIMENSION	TOLERANCES					DWG. BY	UNIT	mm
0.0 0.00	±0.2					<i>Lin Liang</i>		
						<i>William</i>	REV.	A
						<i>wang jiaqian</i>	DWG. NO.	HIWA/QR-JZ-34-LEDEW-15
							DATE	2011/28
							CHK. BY	
							DWG. BY	
							REVISION RECORD	
							LTR.	A
							PRIST ANGLE PROJ	