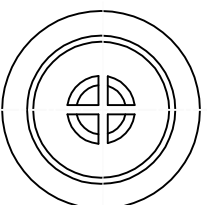
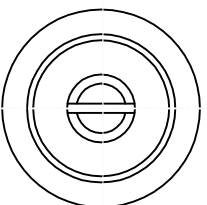
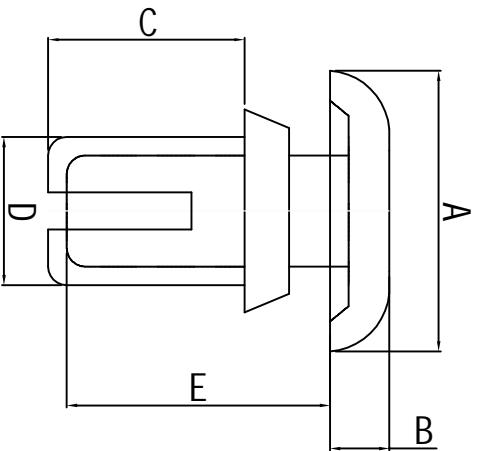


料号 Part NO.	品名 Parts Name	Hole Dia 孔径	Panel Thick 孔径	A	B	C	D	E	拉拔力
34-R2040	尼龙铆钉 R2040	2.1	2.1-2.8	4.2	1.2	4.0	2.0	5.5	3KG



- ◆ MATERIAL: NYLON 66 (UL)
 - ◆ FLAME CLASS: 94V-2
 - ◆ COLOR: NATURAL/BLACK
- 公差要求: 未标注公差±0.5

DIMENSION	TOLERANCES									
0.0 0.00	±0.5									
FIRST ANGLE PROJ		A	NEW PART	sullivan	zy.wang	2011/28				
		LTR.	REVISION RECORD	DWG. BY	CHK. BY	DATE				
DWG. BY	liu liang	UNIT	mm							
CHK. BY	sullivan	REV.	A							
APP. BY	wang zhiyan	DWG. NO.	H1W1A/OR-JZ-34-R2040							



未经许可不得修改和复印
该知识产权属于技术质量部;

HIMA 苏州惠华电子科技有限公司