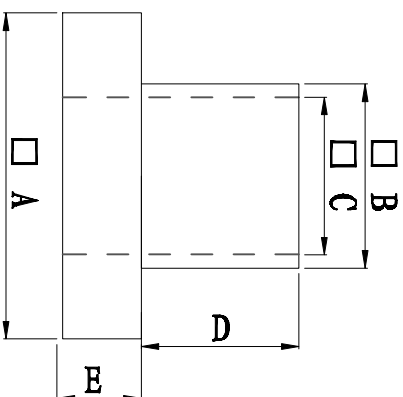
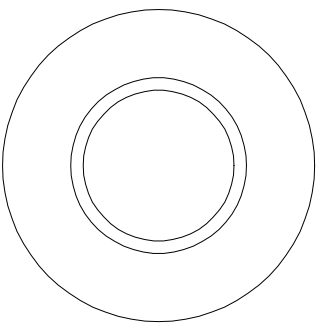


料号 Part NO.	品名 Parts Name	型号 Part NO.	尺寸Dimension					备注
			A (mm)	B (mm)	C (mm)	D (mm)	E (mm)	
69-TW-1	电晶体垫片	TW-1	6.0	3.6	3.0	1.5	1.5	



◆ MATERIAL: PA66 V2/PBT/

PA46/PPS/PA66 V0

◆ COLOR: NATURAL

◆ UNIT: mm

用途: 锁于电晶体上,
避免晶体外壳与散热片间造成短路。



未经许可不得修改和复印
该知识产权属于技术质量部

DIMENSION	TOLERANCES	FIRST ANGLE PROJ				
		A	NEW PART	DWG. BY	CHK. BY	DATE
0.0	± 0.3	LTR.	REVISION RECORD			
0.00						
DWG. BY	UNIT	CHK. BY	REV.	DWG. NO.	HIWA/OR-JZ-69-TW-1	
<i>Lin Liang</i>	mm	<i>Wang Shiyuan</i>	A			
APP. BY						
<i>wang shiyuan</i>						