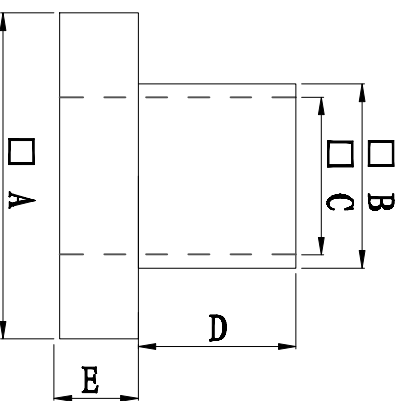
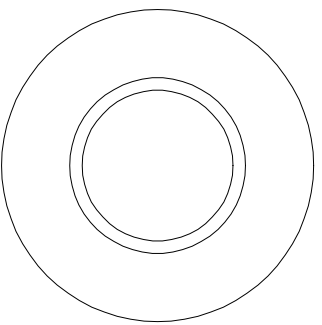


料号 Part NO.	品名 Parts Name	型号 Part NO.	尺寸Dimension					备注
			A (mm)	B (mm)	C (mm)	D (mm)	E (mm)	
69-TW-18	电晶体垫片	TW-18	6.35	5.15	3.5	1.6	0.6	



◆ MATERIAL: PA66 V2/PBT/
PA46/PPS/PA66 V0


◆ COLOR: NATURAL

◆ UNIT: mm

用途: 锁于电晶体上,
避免晶体外壳与散热片间造成短路。



未经许可不得修改和复印
该知识产权属于技术质量部

DIMENSION	TOLERANCES	A	NEW PART	DWG. BY	CHK. BY	DATE	DWG. BY	UNIT	mm
							CHK. BY	REV.	
0.0 0.00	± 0.3						<i>liu liang</i>		
							<i>caulicau</i>		
							<i>wang shiyuan</i>		
FIRST ANGLE PROJ 									
							APP. BY	DWG. NO.	HIMA/OR-J2- 69-TW-18

HIMA 惠华电子科技有限公司