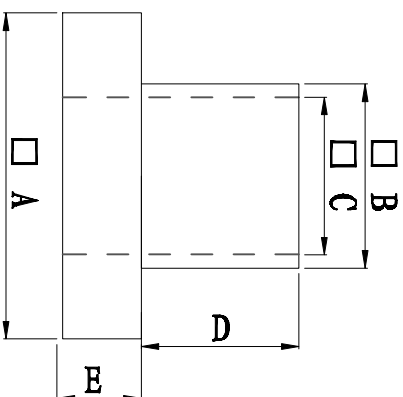
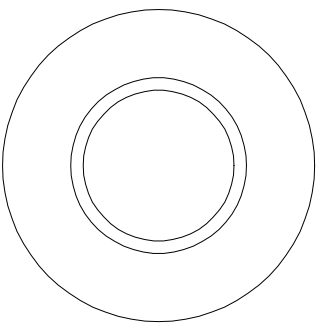


料号 Part NO.	品名 Parts Name	型号 Part NO.	尺寸Dimension					备注
			A (mm)	B (mm)	C (mm)	D (mm)	E (mm)	
69-TW-22	电晶体垫片	TW-22	11.9	7.9	4.0	3.0	2.6	



- ◆ MATERIAL: PA66 V2/PBT/
PA46/PPS/PA66 V0
- ◆ COLOR: NATURAL
- ◆ UNIT: mm

用途: 锁于电晶体上,
避免晶体外壳与散热片间造成短路。



未经许可不得修改和复印
该知识产权属于技术质量部

DIMENSION	TOLERANCES	FIRST ANGLE PROJ				
		A	NEW PART	REVISED	CHEK BY	DATE
0.0 0.00	±0.3	LTR.	REVISION RECORD	DWG. BY	CHK. BY	DATE

DWG. BY	CHK. BY	APP. BY	UNIT	REV.	DWG. NO.
Lin liang	cailiuau	wang shiyuan	mm	A	HIWA/OR-J2-69-TW-22