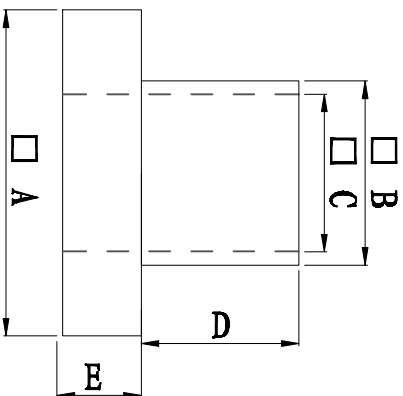
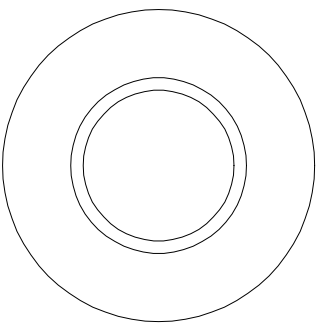


料号 Part NO.	品名 Parts Name	型号 Part NO.	尺寸Dimension					备注
			A (mm)	B (mm)	C (mm)	D (mm)	E (mm)	
69-TW-26	电晶体垫片	TW-26	6.0	3.7	3.0	5.2	1.0	



◆ MATERIAL: PA66 V2/PBT/

PA46/PPS/PA66 V0

◆ COLOR: NATURAL

◆ UNIT: mm

用途: 锁于电晶体上,
避免晶体外壳与散热片间造成短路。



未经许可不得修改和复印
该知识产权属于技术质量部

DIMENSION	TOLERANCES	FIRST ANGLE PROJ			
		A	NEW PART	DWG. BY	CHK. BY
0.0 0.00	± 0.3	LTR.	REVISION RECORD	DATE	
DWG. BY	CHK. BY	UNIT	REV.	DWG. NO.	
CHK. BY	APP. BY				