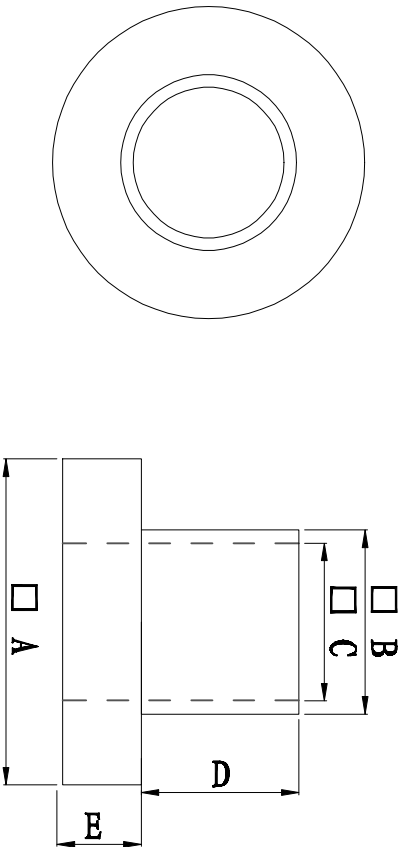


料号 Part NO.	品名 Parts Name	型号 Part NO.	尺寸Dimension					备注
			A (mm)	B (mm)	C (mm)	D (mm)	E (mm)	
69-TW-35	电晶体垫片	TW-35	6.0	3.55	2.95	1.2	1.3	



- ◆ MATERIAL: PA66 V2/PBT/
PA46/PPS/PA66 V0
 - ◆ COLOR: NATURAL
 - ◆ UNIT: mm
- 用途: 锁于电晶体上,
避免晶体外壳与散热片间造成短路。



未经许可不得修改和复印
该知识产权属于技术质量部

DIMENSION		TOLERANCES		FIRST ANGLE PROJ				
0.0	0.00	± 0.3		A	NEW PART		DATE	
				LTR.	REVISION RECORD	DWG. BY	CHK. BY	
DWG. BY	<i>Lin liang</i>	UNIT	mm	CHK. BY	<i>cailiang</i>	REV.	A	
APP. BY	<i>wang shiyuan</i>	DWG. NO.	HIMA/OR-JZ-69-TW-35					