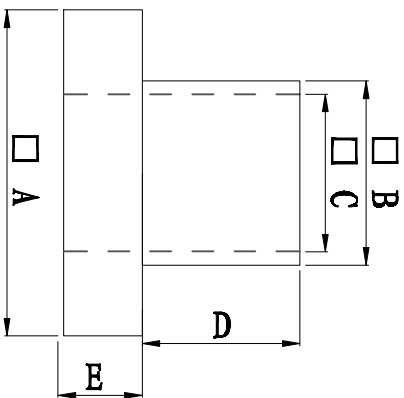
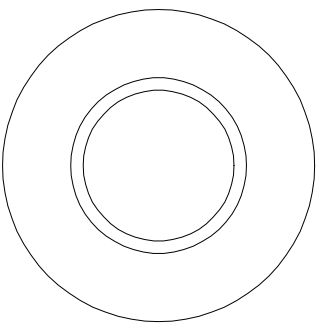


料号 Part NO.	品名 Parts Name	型号 Part NO.	尺寸Dimension					备注
			A (mm)	B (mm)	C (mm)	D (mm)	E (mm)	
69-TW-78	电晶体垫片	TW-78	21.0	17.4	16.2	2.8	0.8	



- ◆ MATERIAL: PA66 V2/PBT/  
PA46/PPS/PA66 V0
  - ◆ COLOR: NATURAL
  - ◆ UNIT: mm
- 用途: 锁于电晶体上,  
避免晶体外壳与散热片间造成短路。



未经许可不得修改和复印  
该知识产权属于技术质量部

DIMENSION	TOLERANCES	FIRST ANGLE PROJ			
		A	NEW PART	DWG. BY	CHEK. BY
0.0 0.00	± 0.3	LTR.	REVISION RECORD	DATE	

DWG. BY	<i>Lin Liang</i>	UNIT	mm
CHK. BY	<i>cailiuau</i>	REV.	A
APP. BY	<i>wang shiyuan</i>	DWG. NO.	HIMA/OR-JZ-69-TW-78

**HIMA** 惠华苏州惠华电子科技有限公司