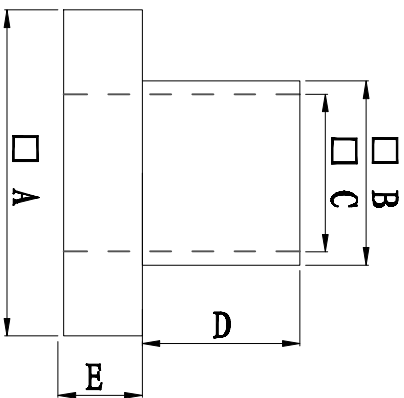
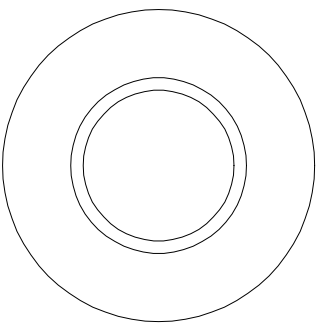


料号 Part NO.	品名 Parts Name	型号 Part NO.	尺寸Dimension					备注
			A (mm)	B (mm)	C (mm)	D (mm)	E (mm)	
69-TW-108	电晶体垫片	TW-108	6.4	3.5	3.0	2.0	1.2	



◆ MATERIAL: PA66 V2/PBT/
PA46/PPS/PA66 V0
◆ COLOR: NATURAL
◆ UNIT: mm
用途: 锁于电晶体上,
避免晶体外壳与散热片间造成短路。



未经受权不得修改和复印
该知识产权属于技术质量部

DIMENSION	TOLERANCES	A	NEW PART	DWG. BY	CHK. BY	DATE	DWG. BY		UNIT
							CHK. BY	DATE	mm
0.0 0.00	± 0.3						<i>liu liang</i>		
							<i>callivan</i>	REV.	A
							<i>wang shiyuan</i>	DWG. NO.	HIWA/OR-JZ-69-TW-108
								APP. BY	



FIRST ANGLE PROJ
LTR. A
REVISION RECORD
DWG. BY
CHK. BY
DATE