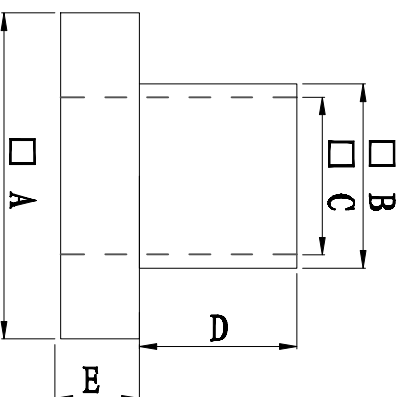
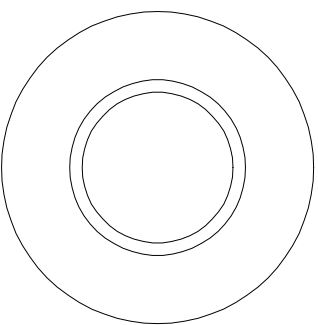


料号 Part NO.	品名 Parts Name	型号 Part NO.	尺寸Dimension					备注
			A (mm)	B (mm)	C (mm)	D (mm)	E (mm)	
69-TW-115	电晶体垫片	TW-115	6.3	3.5	3.0	2.6	2.0	



◆ MATERIAL: PA66 V2/PBT/

PA46/PPS/PA66 V0

◆ COLOR: NATURAL

◆ UNIT: mm

用途: 锁于电晶体上,
避免晶体外壳与散热片间造成短路。



未经许可不得修改和复印
该知识产权属于技术质量部

DIMENSION	TOLERANCES	FIRST ANGLE PROJ			
		A	NEW PART	DWG. BY	CHK. BY
0.0	± 0.3				
0.00					
		LTR.	REVISION RECORD	DATE	
DWG. BY	UNIT	CHK. BY	REV.	DWG. NO.	
<i>liu liang</i>	mm	<i>wang shiyuan</i>	A	HIMA/OR-JZ-69-TW-115	
CHK. BY					
<i>cailiu</i>					
APP. BY					
<i>wang shiyuan</i>					