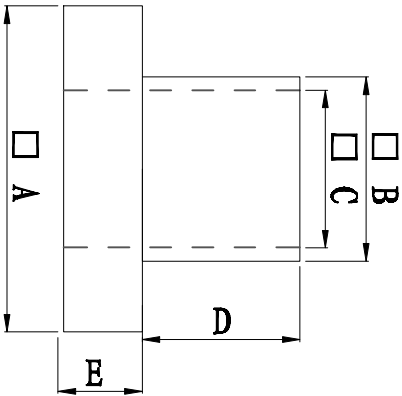
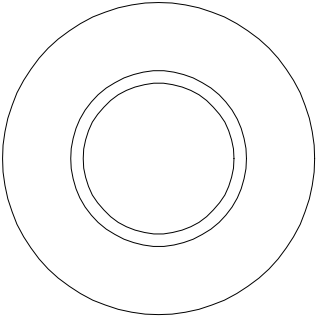


料号 Part NO.	品名 Parts Name	型号 Part NO.	尺寸Dimension					备注
			A (mm)	B (mm)	C (mm)	D (mm)	E (mm)	
69-TW-146	电晶体垫片	TW-146	14.0	8.1	3.1	1.8	2.5	



◆ MATERIAL: PA66 V2/PBT/
PA46/PPS/PA66 V0
◆ COLOR: NATURAL
◆ UNIT: mm
用途: 锁于电晶体上,
避免晶体外壳与散热片间造成短路。



未经受权不得修改和复印
该知识产权属于技术质量部

DIMENSION	TOLERANCES				
0.0 0.00	± 0.3				
FIRST ANGLE PROJ		A	NEW PART	DATE	
		LTR.	REVISION RECORD	DWG. BY	CHK. BY
DWG. BY	<i>Lin Liang</i>	UNIT	mm		
CHK. BY	<i>cailiuau</i>	REV.	A		
APP. BY	<i>wang shiyun</i>	DWG. NO.	HIMA/OR-JZ-69-TW-146		