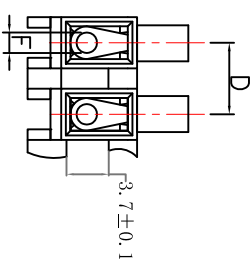
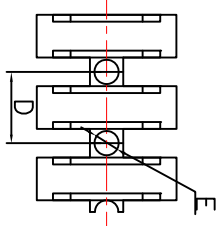
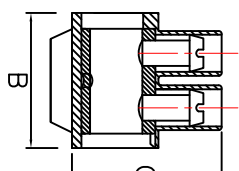
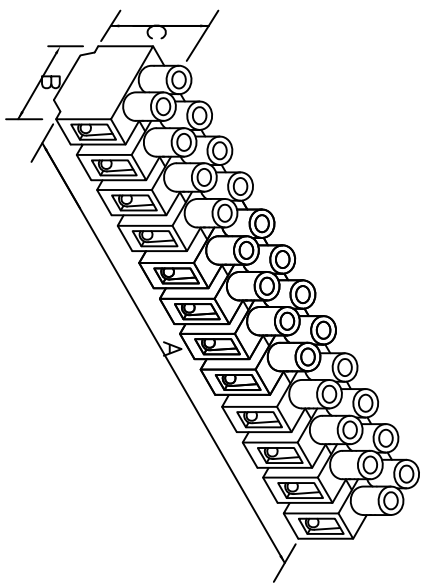


41-PA10B	端子台(底座加高型)	PA10B	2.5mm ²	M3.0×6.9	117.2	18.80	14.70	10.00	3.25	3.45±0.1	50pcs/bag 500pcs/Ctn	CCC
----------	------------	-------	--------------------	----------	-------	-------	-------	-------	------	----------	-------------------------	-----



介绍:

PA 66 工程塑料外壳, UL 94V-2 阻燃等级。

锌合金或钢板接线端子。

剥线后插入端子两端。

嵌壁螺丝和管状接点增加安全性, 有助于防止短路。

适用于照明器具。

安规: 450V 24A 2.5

未经许受权不得修改和复印

该知识产权属于技术质量部



DIMENSION	TOLERANCES					DWG. BY	CHK. BY	APP. BY	UNIT	REV.	DWG. NO.
0.0 0.00	±0.5					<i>lva liang</i>	<i>sullivan</i>	<i>wang zheyuan</i>	mm	A	HIMA/GR-41-PA10B
FRIST ANGLE PROJ		A	NEW PART	REVISION RECORD							



HIMA 惠华电子科技有限公