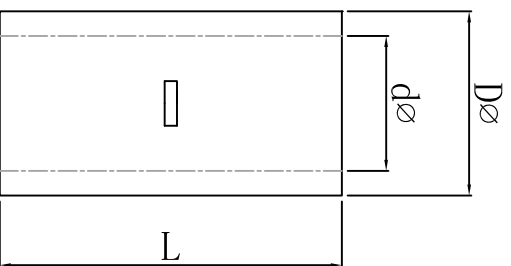
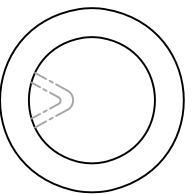


料号 material No.	品名 Parts Name	型号 Part NO.	导线截面 cable size (mm ²)	Dø	dø	L
40-BN 22	中间裸接头	BN 22	#4 25mm ²	11.4	7.7	29.0



说明:
 材质: 紫铜, 镀白锌;
 颜色: 银白色



DIMENSION		TOLERANCES		DWG. BY		CHK. BY		DATE	
0.0	0.00	±0.5		<i>wallian</i>	<i>zy.wang</i>	<i>202105</i>			
FIRST ANGLE PROJ		A	NEW PART	<i>wallian</i>	<i>zy.wang</i>	<i>202105</i>			
LTR.		REVISION RECORD	DWG. BY	CHK. BY	DATE				
DWG. BY		CHK. BY	REV.	DWG. NO.	UNIT	mm			
<i>liu liang</i>		<i>wallian</i>	A	HIMA/QR-JZ-40-BN 22					
APP. BY		DWG. NO.							
<i>wang zhiyan</i>									

未经许可不得修改和复印
 该知识产权属于技术质量部