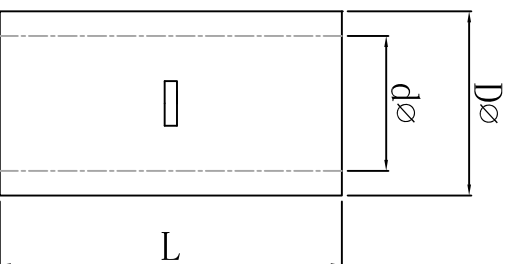
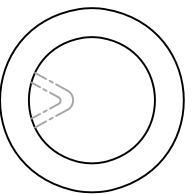


料号 material No.	品名 Parts Name	型号 Part NO.	导线截面 cable size (mm ²)	D \emptyset	d \emptyset	L
40-BN 150	中间裸接头	BN 150	250-300MCM 150mm ²	26.5	19.5	54.0



说明:
 材质: 紫铜, 镀白锌;
 颜色: 银白色



DIMENSION	TOLERANCES	FIRST ANGLE PROJ				DATE	DWG. BY	CHK. BY	UNIT	mm
		LTR	NEW PART	REVISION RECORD	DWG. BY					
0.0 0.00	±0.5	A			202105	liu liang	wang zhiyan	REV.	A	
						APP. BY		DWG. NO.	HIMA/QR-JZ-40-BN 150	

未经许可不得修改和复印
 该知识产权属于技术质量部