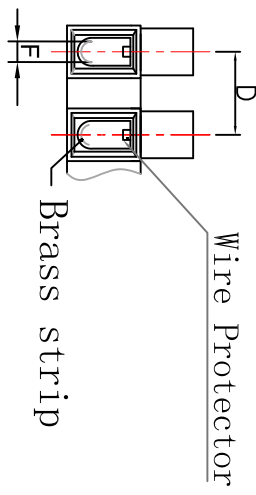
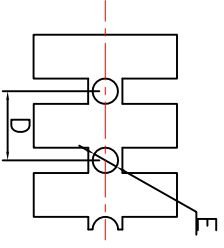
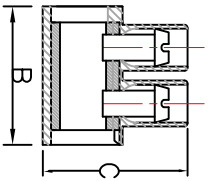
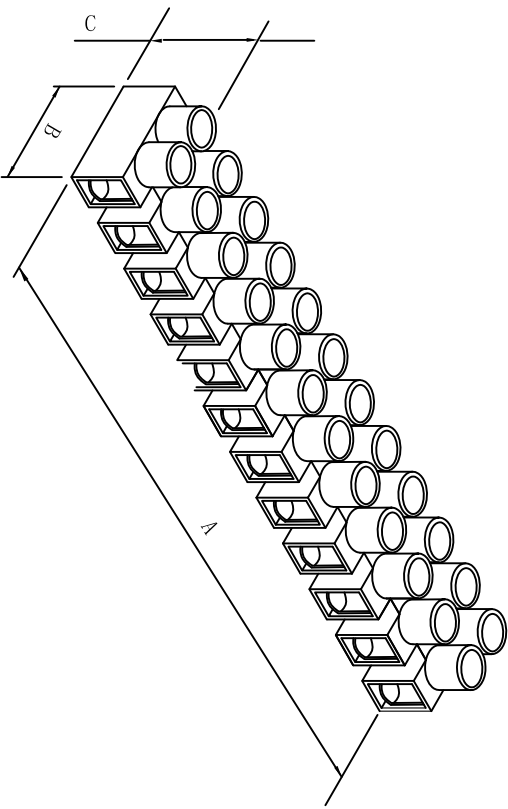


料号 Part NO.	品名 Parts Name	型号 Part NO.	适用电线/wrie Range		Screw 螺丝	尺寸 Dimensions(mm/in.)						Packing 包装	相关认证
			Cross-Sec.	AWG,Cu		A	B	C	D	E	F		
41-PA9FDS	端子台	PA9FDS	2.5mm <sup>2</sup>	#22-#12 Sol/Str	M3×6	116.8	20.2	16.2	10.0	3.6	3.2±0.1	50pcs/bag 500pcs/Ctn	VDE/FI/CQC/UL/CSA



介绍：  
底座：平底。  
材质：尼龙66 工程塑胶，  
防火等级UL 94V-2阻燃等级。  
温度：105℃ (UL) ，-30℃to110℃ (IEC) 。  
线座：钢板，镀锌。  
螺丝：铁线，镀锌。  
压片：不锈钢材质  
剥线长度：PA9约6.4/0.26  
接线排数：12排  
接术参数(安规认证与电气规格)：VDE/FI/CQC/：450V,17.5A,1.5mm<sup>2</sup>  
UL/CSA:300V,20A,#22-#12

未经授权不得修改和复印  
该知识产权属于技术质量部

DIMENSION	TOLERANCES	FIRST ANGLE PROJ								
		0.0 0.00	±0.50	LTR.	A					
		NEW PART	REVISION RECORD	DWG. BY	CHK. BY	DATE	DWG. BY	CHK. BY	DATE	UNIT
		allliana	3% wang	2020/08	APP. BY	allliana	wang ziyuan	allliana	2020/08	mm
					APP. BY	allliana	wang ziyuan	allliana	2020/08	A
					APP. BY	allliana	wang ziyuan	allliana	2020/08	A

DWG. BY: lia liang  
CHK. BY: allliana  
APP. BY: wang ziyuan  
DWG. NO.: HIMA/OR-JZ-41-PA9FDS

