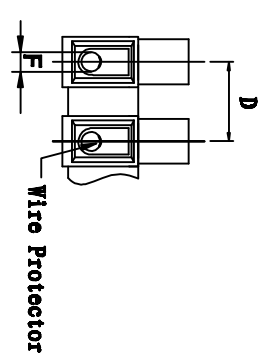
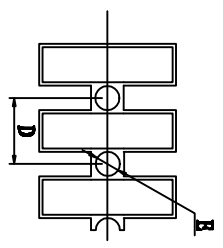
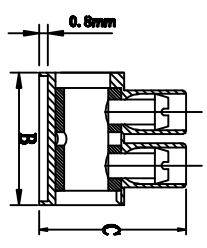
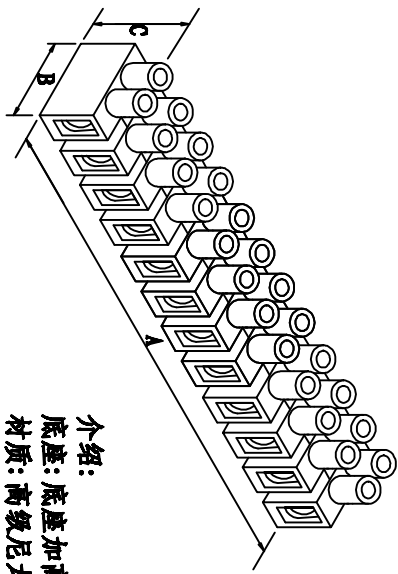


料号 Part NO.	品名 Parts Name	型号 Part NO.	适用电线/wire Range		螺丝 螺钉	尺寸 Dimensions (mm/in.)						包装 Packing	相关认证
			Cross-Sec.	AWG, Cu		A	B	C	D	E	F		
41-12HDSH	端子台(H型)	PA12 DS(环保铜)	6mm <sup>2</sup>	#22-#10 Sol Str	M3.5 x 7	140.7	23.80	19.00	12.00	3.90	4.2 ± 0.1	40pcs/bag 400pcs/Ctn	VDE/FI/CQC/UL/CSA



**介绍:**  
 底座: 底座加高0.8mm.  
 材质: 高级尼龙66工程塑胶,  
 防火等级UL 94V-2阻燃等级.  
 温度: 105°C (UL), -30°C to 110°C (IEC).  
 线座: 铜合金, 镀镍.  
 压片: 不锈钢材质, PA12 DS附加弹片.  
 螺丝: 铁线, 镀锌.  
 引线长度: 约7.0mm/0.28in.  
 接线排数: 12排.  
 公差: 未标注为 ± 1mm

**技术参数:**  
 VDE/FI/CQC: 500V, 41A, 6.0mm<sup>2</sup>  
 UL/CSA: 300V, 35A, #22-#10



DIMENSION	TOLERANCES	REVISION				DATE	DWG. BY	CHK. BY	APP. BY	DWG. NO.	UNIT	MM
		A	NEW PART	REVISION RECORDED	DATE							
0.0 0.00	± 0.50											
FRIST ANGLE PROJ												

未经许受权不得修改和复印  
 该知识产权属于技术质量部

HIMA 惠华电子科技有限公司