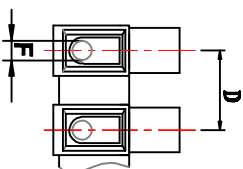
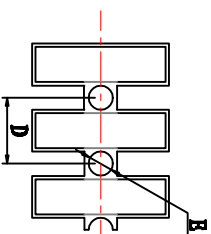
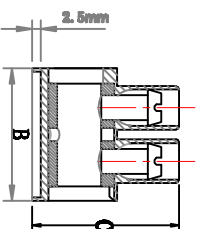
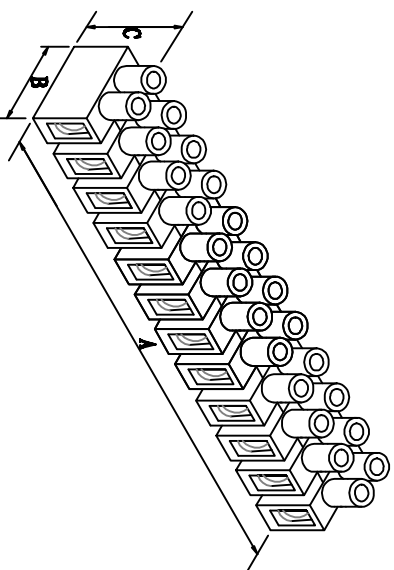


料号 Part NO.	品名 Parts Name	型号 Part NO.	适用电线/wire Range		Screw 螺丝	尺寸 Dimensions (mm/in.)						包装 Packing	相关认证
			Cross-Sec.	AWG, Cu		A	B	C	D	E	F		
41-14H	端子台(H型)	PA14	10mm ²	#20-#8 sol/str	M4.0 x 9	158.00	25.60	25.00	13.50	4.40	5.0 ± 0.1		VDE/FI/CQC/UL/CSA



介绍:
 底座: 底座加高1.2-2.5mm.
 材质: 高级尼龙66工程塑胶,
 防火等级 UL 94V-2.
 温度: 105°C (UL), -20°C to T110°C (IEC)
 线座: 铜合金, 镀镍.
 弹片: 不锈钢材质.
 螺丝: 铁线, 镀锌.
 剥线长度: PA14H约9.0mm/0.351in.
 接线排数: 12排, 可裁切不同排数.
 公差: 未标注为 ±1

技术参数:
 VDE/FI/CQC: 500V, 57A, 10mm²
 UL: 300V, 50A, #20-#8

技术要求:
 有光泽, 手感好, 无掉齿
 无封洞, 无气泡, 无飞边

未经许受权不得修改和复印
 该知识产权属于技术质量部

DIMENSION	TOLERANCES	REVISION RECORD						DATE
		A	NEW PART	address	approval	CHK. BY	DATE	
0.0	±0.30							
0.00								
FRIST ANGLE PROJ		LTR.	REVISION	DATE				

DWG. BY	CHK. BY	APP. BY	UNIT	REV.	DWG. NO.
Lin Liang	William	wang shuan	mm	A	HIWA/QR-JZ-41-14H

HWA 惠华电子科技有限公