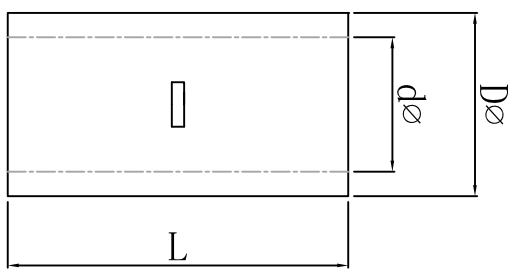
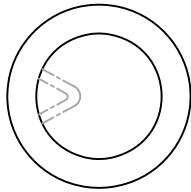


料号 material No.	品名 Parts Name	型号 Part NO.	导线截面 cable size (mm ²)	D \emptyset	d \emptyset	L
40-BN1.25	中间裸接头	BN1.25	22-16 0.5-1.5mm ²	3.3	1.7	15



说明：
 材质：紫铜，镀白锌；
 颜色：银白色



未经许可不得修改和复印
 该知识产权属于技术质量部

DIMENSION	TOLERANCES	FIRST ANGLE PROJ		LTR.	NEW PART	REVISION RECORD	DWG. BY	CHK. BY	DATE	DWG. BY	CHK. BY	REV.	UNIT	mm
0.0 0.00	±0.5	A					<i>sullivan</i>	<i>zy.wang</i>	<i>202108</i>	<i>liu liang</i>	<i>sullivan</i>			
										APP. BY	<i>wang zhiyan</i>	DWG. NO.	HIMA/QR-JZ-40-BN1.25	
										APP. BY	<i>wang zhiyan</i>	DWG. NO.	HIMA/QR-JZ-40-BN1.25	