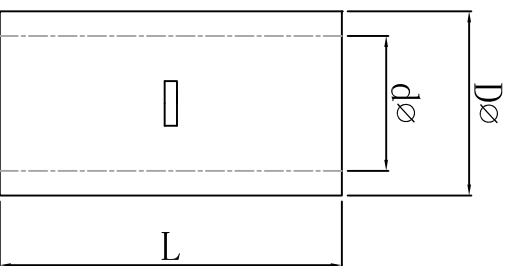
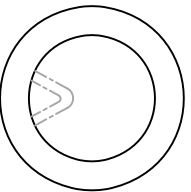


料号 material No.	品名 Parts Name	型号 Part NO.	导线截面 cable size (mm <sup>2</sup> )	Dø	dø	L
40-BN 38	中间裸接头	BN 38	#2 35mm <sup>2</sup>	13.3	9.4	32.0



说明：  
 材质：紫铜，镀白锌；  
 颜色：银白色



DIMENSION	TOLERANCES	FIRST ANGLE PROJ				DWG. BY	CHK. BY	DATE	DWG. BY	CHK. BY	REV. NO.	UNIT	mm
		LTR.	A	NEW PART	REVISION RECORD								
0.0 0.00	±0.5												
APP. BY			DWG. BY			UNIT			REV. NO.			HIMA/QR-JZ-40-BN 38	
wang zhiyan			liu liang			mm			A				
CHK. BY			DWG. BY			REV.			APP. BY			HIMA/QR-JZ-40-BN 38	
sullivan			liu liang			mm			wang zhiyan				

未经许可不得修改和复印  
 该知识产权属于技术质量部