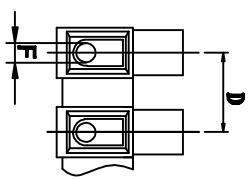
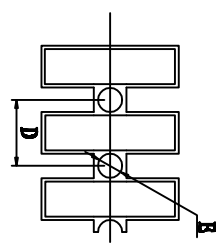
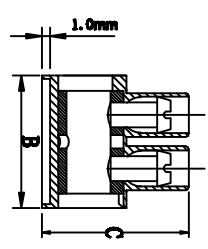
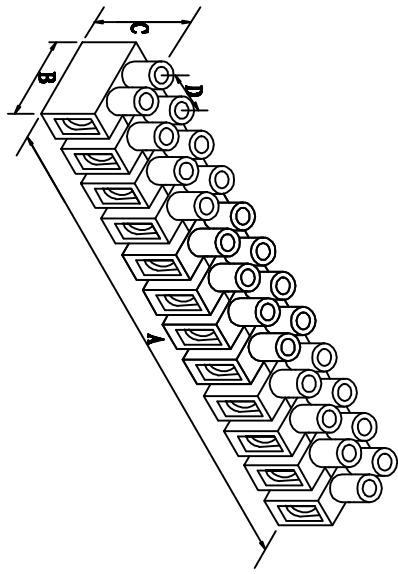


料号 Part NO.	品名 Parts Name	型号 Part NO.	通用电线/wrie Range		螺丝 螺钉	尺寸 Dimensions (mm/in.)						包装 Packing	相关认证
			Cross-Sec.	AWG, Cu		A±1.5	B	C	D	BØ	F		
41-08HH	端子台(H型)	PA8	1.5mm ²	#22-#12 Sol #22-#12 Str	M2.6 x 5	96.20	17.00	14.50	8.20	2.90	2.8 ± 0.1	50pcs/bag 500pcs/Ctn	VDE/FI/CQC/UL/CSA



介绍:
 底座: 底座加高1.0mm.
 材质: 高级尼龙66工程塑胶,
 防火等级UL 94V-2阻燃等级.
 温度: 105°C (UL), -30°C to 110°C (IEC).
 线座: 铜合金, 镀锌.
 螺丝: 铁线, 镀锌.
 剥线长度: PA8约5.0mm/0.20in.
 接线排数: 12排.

技术参数 (安规认证与电气规格):
 VDE/FI/CQC/: 450V, 17.5A, 1.5mm²
 UL/CSA: 300V, 20A, #22-#12

DIMENSION	TOLERANCES	REVISION RECORD				DATE	DWG. BY	CHK. BY	DATE	DWG. NO.	REV.	UNIT
		A	NEW PART	ADDRESS	SYMBOL							
0.0 0.00	±1.0											
FIRST ANGLE PROJ		LTR.										

未经授权不得修改和复印
 该知识产权属于技术质量部

DWG. BY	CHK. BY	APP. BY	DWG. NO.
<i>Lu Wang</i>	<i>alluan</i>	<i>wang shiyuan</i>	HIWA/QR-VZ-41-08HH

HWA 惠华 苏州惠华电子科技有限公司