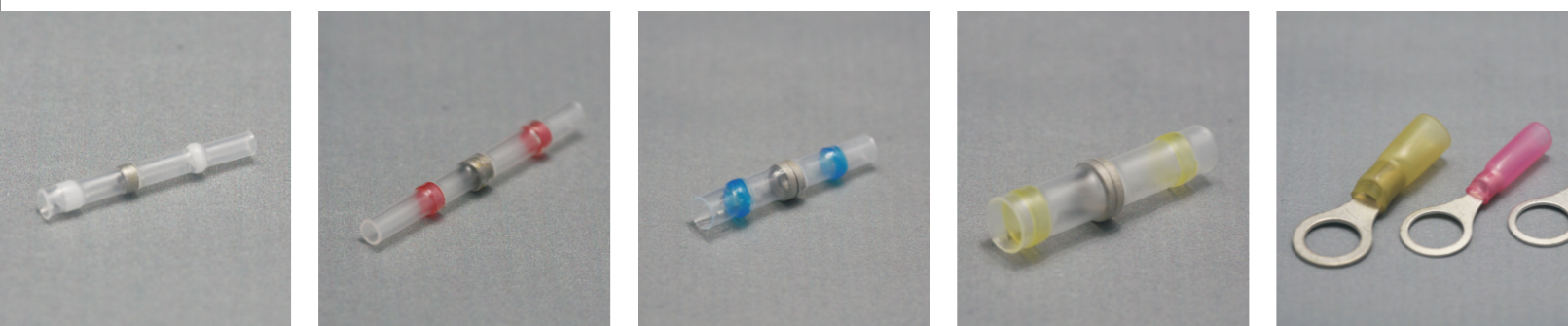
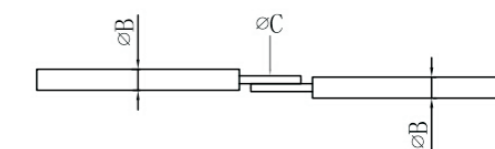
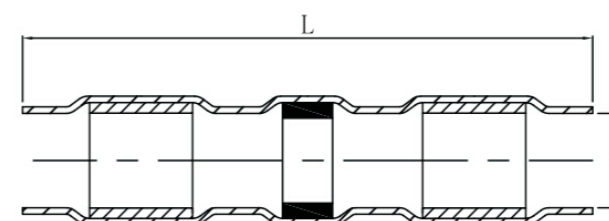


热缩类接线端子 Heat shrink wire terminals



HS-SST-100 Shrink Soldersleeve 单环环保型焊锡环

- Shrink ratio: 2:1
- Waterproof for wiring splices
- Transparent sleeve provides visual inspection
- High elasticity assures steady performance
- Easy control of soldering process
- Operating temperature: -55°C ~ 125°C
- Minimum shrink temperature: 140°C
- 收缩比 2: 1
- 热熔胶条具有防水功能
- 高透明热缩套管
- 高弹性保证稳定性能
- 操作简单
- 耐温范围：-55°C~125°C
- 最低完全收缩温度：140°C



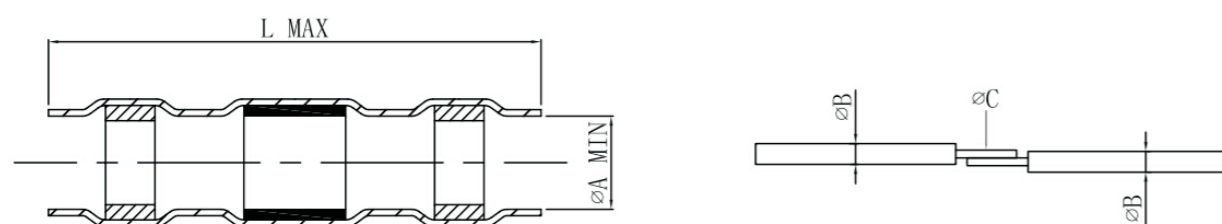
详细参数

产品代码 Product Code	颜色 Size Code Color item 3	长度 L (mm)	锡环数量 Qty	直径 Φ A Min (mm)	线尺寸 Wire Dimensions (mm)			电缆尺寸 Cable size AWG (mm ²)
					B Min	B Max C Max	C Min	
HW-SST-100-01	白色 White	26	1	1.7	0.4	1.7	0.76	26-24(0.25-0.5)
HW-SST-100-02	红色 Red	40	1	2.7	1.3	2.7	1.2	22-18(0.5-1.5)
HW-SST-100-03	蓝色 Blue	40	1	4.5	1.8	4.5	2.0	16-14(1.5-2.5)
HW-SST-100-04	黄色 Yellow	40	1	6.0	2.8	6.0	3.4	12-10(4.0-6.0)



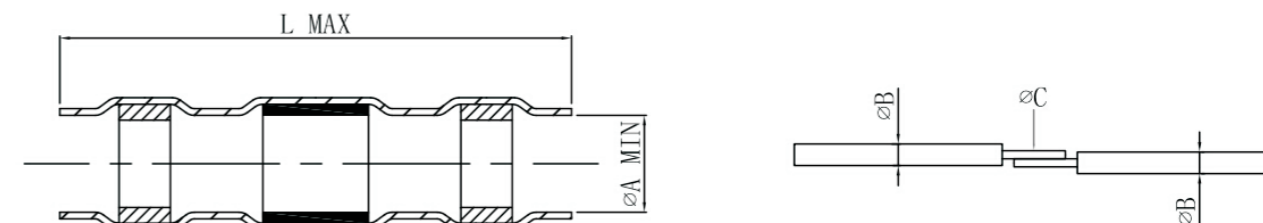
HS-SST-200 Shrink Soldersleeve 单环环保型焊锡环

- Shrink ratio: 2:1
- Waterproof for wiring splices
- Transparent sleeve provides visual inspection
- High elasticity assures steady performance
- Easy control of soldering process
- Operating temperature: -55°C ~ 125°C
- Minimum shrink temperature: 140°C
- 收缩比 2: 1
- 热熔胶条具有防水功能
- 高透明热缩套管
- 高弹性保证稳定性能
- 操作简单
- 耐温范围：-55°C~125°C
- 最低完全收缩温度：140°C



HS-SST-300 Shrink Soldersleeve 单环环保型焊锡环

- Shrink ratio: 2:1
- Waterproof for wiring splices
- Transparent sleeve provides visual inspection
- High elasticity assures steady performance
- Easy control of soldering process
- Operating temperature: -55°C ~ 125°C
- Minimum shrink temperature: 140°C
- 收缩比 2: 1
- 热熔胶条具有防水功能
- 高透明热缩套管
- 高弹性保证稳定性能
- 操作简单
- 耐温范围：-55°C~125°C
- 最低完全收缩温度：140°C



详细参数

产品代码 Product Code	颜色 Size Code Color item 3	长度 L(mm)	锡环数量 Qty	直径 Φ A Min (mm)	线尺寸 Wire Dimensions(mm)			电缆尺寸 Cable size AWG (mm ²)
					B Min	B Max C Max	C Min	
HW-SST-200-01	白色 White	26	1	1.7	0.4	1.7	0.76	26-24(0.25-0.5)
HW-SST-200-02	红色 Red	40	1	2.7	1.3	2.7	1.2	22-18(0.5-1.5)
HW-SST-200-03	蓝色 Blue	40	1	4.5	1.8	4.5	2.0	16-14(1.5-2.5)
HW-SST-200-04	黄色 Yellow	40	1	6.0	2.8	6.0	3.4	12-10(4.0-6.0)

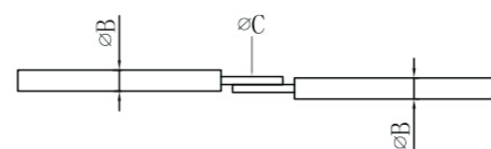
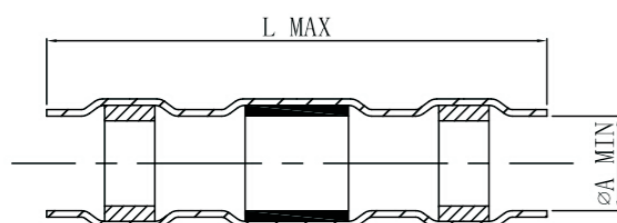
详细参数

产品代码 Product Code	颜色 Size Code Color item 3	长度 L(mm)	锡环数量 Qty	直径 Φ A Min (mm)	线尺寸 Wire Dimensions(mm)			电缆尺寸 Cable size AWG (mm ²)
					B Min	B Max C Max	C Min	
HW-SST-300-01	白色 White	26	1	1.7	0.4	1.7	0.76	26-24(0.25-0.5)
HW-SST-300-02	红色 Red	40	1	2.7	1.3	2.7	1.2	22-18(0.5-1.5)
HW-SST-300-03	蓝色 Blue	40	1	4.5	1.8	4.5	2.0	16-14(1.5-2.5)
HW-SST-300-04	黄色 Yellow	40	1	6.0	2.8	6.0	3.4	12-10(4.0-6.0)



HS-SST-400 Shrink Soldersleeve 单环环保型焊锡环

- Shrink ratio: 2:1
- Waterproof for wiring splices
- Transparent sleeve provides visual inspection
- High elasticity assures steady performance
- Easy control of soldering process
- Operating temperature: -55°C ~ 125°C
- Minimum shrink temperature: 140°C
- 收缩比 2: 1
- 热熔胶条具有防水功能
- 高透明热缩套管
- 高弹性保证稳定性能
- 操作简单
- 耐温范围: -55°C~125°C
- 最低完全收缩温度: 140°C



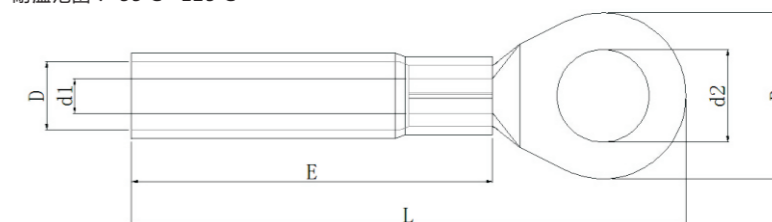
详细参数

产品代码 Product Code	颜色 Size Code Color item 3	长度 L(mm)	锡环数量 Qty	直径 Φ A Min (mm)	线尺寸 Wire Dimensions(mm)			电缆尺寸 Cable size AWG (mm ²)
					B Min	B Max C Max	C Min	
HW-SST-400-01	白色 White	26	1	1.7	0.4	1.7	0.76	26-24(0.25-0.5)
HW-SST-400-02	红色 Red	30	1	2.7	1.3	2.7	1.2	22-18(0.5-1.5)
HW-SST-400-03	蓝色 Blue	35	1	4.5	1.8	4.5	2.0	16-14(1.5-2.5)
HW-SST-400-04	黄色 Yellow	40	1	6.0	2.8	6.0	3.4	12-10(4.0-6.0)



Heat Shrink Ring Terminals 普通圆形压接端子

- Shrink ratio: 3:1
- Excellent conductivity property
- High transparency, High tensile strength
- Excellent stretch and mechanical damage resistance
- High elasticity assures steady performance
- Water proof and moisture resistance
- Operating temperature: -55°C ~ 125°C
- 收缩比 3: 1
- 优良的导电性能
- 高透明度, 高抗拉强度
- 优异的拉伸和机械损伤抵抗力
- 高弹性保证稳定性能
- 防水防潮
- 耐温范围: -55°C~125°C



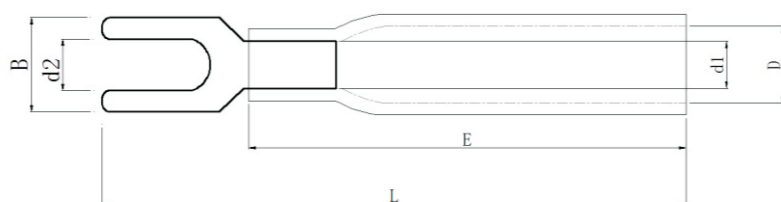
详细参数

型号 Part no.	D (mm)	d1 (mm)	d2 (mm)	B (mm)	E (mm)	L (mm)	颜色 Color	导体 Conductor	端头厚度 Wall of Copper Terminals(mm)
HS-RV1.25-4	4.8	1.6	4.3	8.0	21	28	红色 Red	0.5-1.5mm ² (22-18AWG)	0.7
HS-RV1.25-5	4.8	1.6	5.3	9.52	21	30			
HS-RV1.25-6	4.8	1.6	6.5	11.6	21	33			
HS-RV1.25-8	4.8	1.6	8.5	11.6	21	35			
HS-RV1.25-10	4.8	1.6	10.5	13.6	21	38			
HS-RV2-4	5.8	2.2	4.3	8.5	21	28	蓝色 Blue	1.5-2.5mm ² (16-14AWG)	0.8
HS-RV2-5	5.8	2.2	5.3	9.5	21	30			
HS-RV2-6	5.8	2.2	6.5	12	21	33			
HS-RV2-8	5.8	2.2	8.5	12	21	35			
HS-RV2-10	5.8	2.2	10.5	13.6	21	38			
HS-RV2-12	5.8	2.2	12.5	19.2	21	38	黄色 Yellow	4-6mm ² (12-10AWG)	1.0
HS-RV5.5-4	6.8	3.4	4.3	9.5	25	32			
HS-RV5.5-5	6.8	3.4	5.3	9.5	25	34			
HS-RV5.5-6	6.8	3.4	6.5	12	25	37			
HS-RV5.5-8	6.8	3.4	8.5	15	25	39			
HS-RV5.5-10	6.8	3.4	10.5	15	25	42			
HS-RV5.5-12	6.8	3.4	12.5	19.2	25	42			



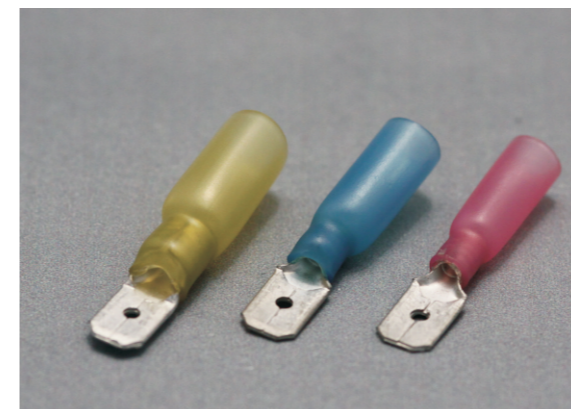
Heat Shrink Spade Terminals 普通叉型压接端子

- Shrink ratio: 3:1
- Excellent conductivity property
- High transparency, High tensile strength
- Excellent stretch and mechanical damage resistance
- High elasticity assures steady performance
- Water proof and moisture resistance
- Operating temperature: -55°C ~ 125°C
- 收缩比 3: 1
- 优良的导电性能
- 高透明度, 高抗拉强度
- 优异的拉伸和机械损伤抵抗力
- 高弹性保证稳定性能
- 防水防潮
- 耐温范围: -55°C~125°C



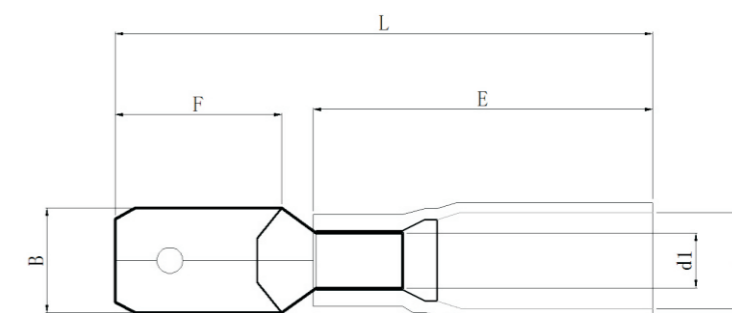
详细参数

型号 Part no.	D (mm)	d1 (mm)	d2 (mm)	B (mm)	E (mm)	L (mm)	颜色 Color	导体 Conductor	端头厚度 Wall of Copper Terminals(mm)
HS-SVS1.25-4	4.8	1.6	4.3	8.1	21	20	红色 Red	0.5-1.5mm ² (22-18AWG)	0.7
HS-SVS1.25-5	4.8	1.6	5.3	9.5	21	30	红色 Red	0.5-1.5mm ² (22-18AWG)	0.7
HS-SVS2-4	5.8	2.2	4.3	8.1	21	30	蓝色 Blue	1.5-2.5mm ² (16-14AWG)	0.8
HS-SVS2-5	5.8	2.2	5.3	9.5	21	30	蓝色 Blue	1.5-2.5mm ² (16-14AWG)	0.8
HS-SV5.5-4	6.8	3.4	4.3	9.0	25	34	黄色 Yellow	4-6mm ² (12-10AWG)	1.0
HS-SV5.5-5	6.8	3.4	5.3	9.0	25	34	黄色 Yellow	4-6mm ² (12-10AWG)	1.0
HS-SV5.5-6	6.8	3.4	6.3	9.0	25	34	黄色 Yellow	4-6mm ² (12-10AWG)	1.0



Heat Shrink Male Terminals 高透明插片型易进线公端子

- Shrink ratio: 3:1
- Excellent conductivity property
- High transparency, High tensile strength
- Excellent stretch and mechanical damage resistance
- High elasticity assures steady performance
- Water proof and moisture resistance
- Operating temperature: -55°C ~ 125°C
- 收缩比 3: 1
- 优良的导电性能
- 高透明度, 高抗拉强度
- 优异的拉伸和机械损伤抵抗力
- 高弹性保证稳定性能
- 防水防潮
- 耐温范围: -55°C~125°C



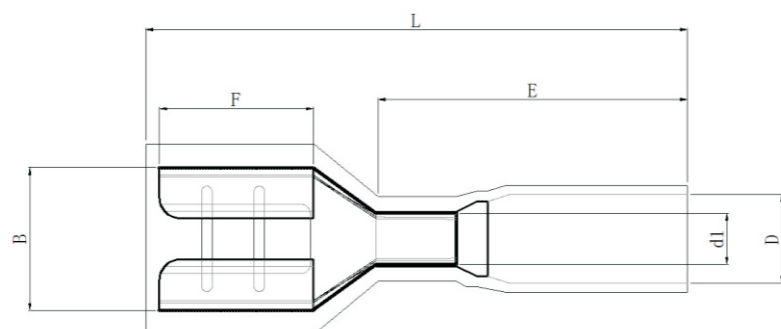
详细参数

型号 Part no.	D (mm)	d1 (mm)	B (mm)	E (mm)	L (mm)	颜色 Color	导体 Conductor	端头厚度 Wall of Copper Terminals(mm)
HS-MDD1.25-187	4.8	1.6	4.8*0.8	21	31	红色 Red	0.5-1.5mm ² (22-18AWG)	0.4mm
HS-MDD2-187	5.8	2.2	4.8*0.8	21	31	蓝色 Blue	1.5-2.5mm ² (16-14AWG)	
HS-MDD5.5-187	6.8	3.4	4.8*0.8	25	35	黄色 Yellow	4-6mm ² (12-10AWG)	
HS-MDD1.25-250	4.8	1.6	6.3*0.8	21	31	红色 Red	0.5-1.5mm ² (22-18AWG)	
HS-MDD2-250	5.8	2.2	6.3*0.8	21	31	蓝色 Blue	1.5-2.5mm ² (16-14AWG)	
HS-MDD5.5-250	6.8	3.4	6.3*0.8	25	35	黄色 Yellow	4-6mm ² (12-10AWG)	



Heat Shrink Female Terminals 普通插片型易进线母端子 (全绝缘)

- Shrink ratio: 3:1
- Excellent conductivity property
- High transparency, High tensile strength
- Excellent stretch and mechanical damage resistance
- High elasticity assures steady performance
- Water proof and moisture resistance
- Operating temperature: -55°C ~ 125°C
- 收缩比 3: 1
- 优良的导电性能
- 高透明度, 高抗拉强度
- 优异的拉伸和机械损伤抵抗力
- 高弹性保证稳定性能
- 防水防潮
- 耐温范围: -55°C~125°C



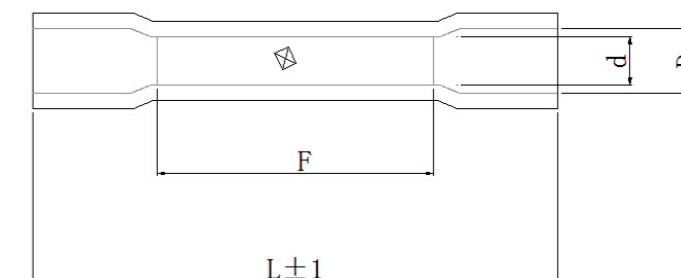
详细参数

型号 Part no.	D (mm)	d1 (mm)	Tab (mm)	B (mm)	L (mm)	颜色 Color	导体 Conductor	端头厚度 Wall of Copper Terminals(mm)
HS-FDFD1.25-187	4.8	1.6	4.8*0.8	5.2	30	红色 Red	0.5-1.5mm ² (22-18AWG)	0.4mm
HS-FDFD2-187	5.8	2.2	4.8*0.8	5.2	30	蓝色 Blue	1.5-2.5mm ² (16-14AWG)	
HS-FDFD5.5-187	6.8	3.4	4.8*0.8	5.2	32	黄色 Yellow	4-6mm ² (12-10AWG)	
HS-FDFD1.25-250	4.8	1.6	6.3*0.8	6.6	30	红色 Red	0.5-1.5mm ² (22-18AWG)	
HS-FDFD2-250	5.8	2.2	6.3*0.8	6.6	30	蓝色 Blue	1.5-2.5mm ² (16-14AWG)	
HS-FDFD5.5-250	6.8	3.4	6.3*0.8	6.6	32	黄色 Yellow	4-6mm ² (12-10AWG)	



Heat Shrink Butt Splices Terminals 普通中间压接端子

- Shrink ratio: 3:1
- Excellent conductivity property
- High transparency, High tensile strength
- Excellent stretch and mechanical damage resistance
- High elasticity assures steady performance
- Water proof and moisture resistance
- Operating temperature: -55°C ~ 125°C
- 收缩比 3: 1
- 优良的导电性能
- 高透明度, 高抗拉强度
- 优异的拉伸和机械损伤抵抗力
- 高弹性保证稳定性能
- 防水防潮
- 耐温范围: -55°C~125°C



详细参数

型号 Part no.	对接接头尺寸 Butt Splice Dimensions		F (mm)	D (mm)	颜色 Color	线范围 Wire Range
	D Min.	L Nom.				
HS-BHT0.5	3.2	28	12	1.0	透明/黄色 Clear/Yellow	0.25-0.5mm ² (26-24AWG)
HS-BHT1.25	4.8	35	15	1.6	红色 Red	0.5-1.5mm ² (22-18AWG)
HS-BHT2	5.8	35	15	2.2	蓝色 Blue	1.5-2.5mm ² (16-14AWG)
HS-BHT5.5	6.8	41	15	3.4	黄色 Yellow	4-6mm ² (12-10 AWG)

惠华精密部件制造部成立于2017年，致力于发展模具制造，精密五金件的生产与销售，目前配置有津上CNC自动车床、MAZAK的CNC自动车床、哈斯加工中心等若干设备。以及3坐标分析仪、光谱分析仪、盐雾实验机等一系列检测设备。

Huihua precision components manufacturing department, founded in 2017, committed to the development of mold building, precision hardware component production and sales. For now, we have several sets of precision machines of TSUGAMI precision automatic lathes, MAZAK precision automatic lathes, HAAS vertical machining centers. We also own quality inspection instruments of 3D coordinate measuring machine, spectral analyzer, salt spray tester and other testing equipment



麦斯公司成立于2011年（为了更好的服务于客户，从惠华集团重组），位于美丽的古城苏州，环境优美，交通便利。公司注册资金300万，是一家专业的标签印刷生产企业，公司拥有一支年轻化、知识化、勇于开拓创新的技术团队，更好的为客户提供强大的技术保障。公司拥有先进的日本琳得科不干胶印刷机器、商标不干胶印刷机、各类模切机、丝网印刷机、覆膜机、分条机、条码打印机、检验设备等。

公司通过ISO9001质量体系认证，通过ISO14001环境体系认证，部分产品获得了UL认证。

Suzhou mass color printing co.,Ltd,was established in 2011.Located in the beautiful ancient city of suzhou. The total investment capital was 3 millions.Our company is a professional manufacturer of printing,from art work design,film,plate,printing to finished products in the facility and label's technical support for full time,we have advanced printing machine and some auxiliary Equipments.

And has passed quality system attestation of ISO9001,the environmental management certification system of 14000.Some products passed UL certification.

